

I MODELLI E TUTTE LE PIEGHE BASE

1000

ORIGAMI

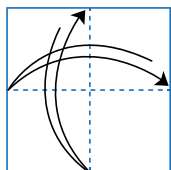
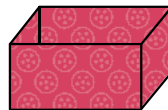
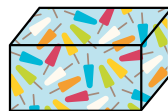
Originali



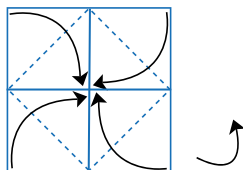
IL CASTELLO



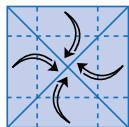
Scatola quadrata



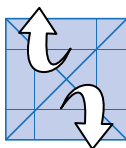
1 MARCATE DUE PIEGHE A VALLE.



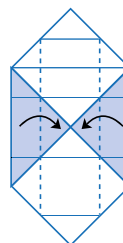
2 PIEGATE I QUATTRO ANGOLI A VALLE VERSO IL CENTRO POI RUOTATE IL MODELLO DI 90°.



3 MARCATE LE PIEGHE PORTANDO I MARGINI AL CENTRO.



4 APRITE LE ALETTE IN ALTO E IN BASSO.

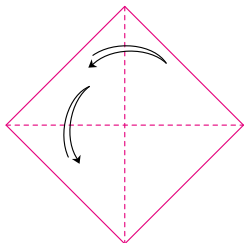
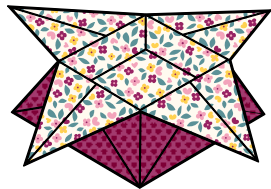


5 PIEGATE I LATI A VALLE VERSO IL CENTRO.

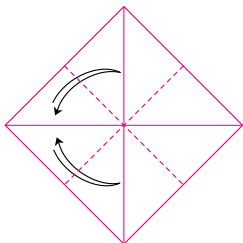




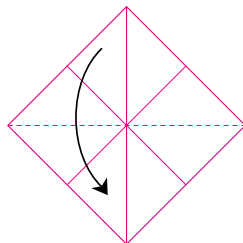
Scatola a fiore



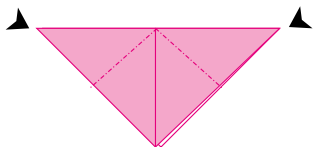
1 MARCATE DUE PIEGHE A VALLE SULLE DIAGONALI.



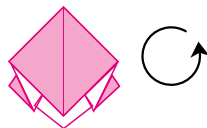
2 MARCATE DUE PIEGHE A VALLE.



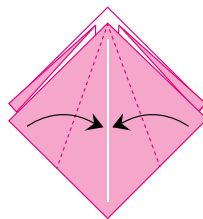
3 PIEGATE A VALLE VERSO IL BASSO.



4 SPINGETE GLI ANGOLI ALL'INTERNO E APPIATTITE.



5 RUOTATE IL MODELLO DI 180°.



6 PIEGATE LE ALETTE SUPERIORI A VALLE.

